



ReaddleDocs 3

App Overview

Readdle, 2012

Contents

Introduction	3
Supported File Formats	3
Additional Capabilities	3
Copying and Sharing Files	4
USB File Transfer	4
ReaddleDocs as a Shared Network Drive	5
Network Storages	5
Network Storage Protocol Notes	6
Network Storage Sync	7
Connecting to “Servers Nearby”	8
Downloading from the Web	9
File Management	10
Interacting with Other Apps	12

Introduction

ReaddleDocs is an advanced documents reader for your iPhone and iPod Touch. Besides displaying documents, it can store files copied by USB or using Wi-Fi, connect to various network storages and save pages from the web.

Supported File Formats

Following file formats are supported by ReaddleDocs:

Web Viewer	.pages, .keynote, .numbers; .doc/.docx, .xls/.xlsx, .ppt/.pptx; .odp, .ods, .odt, .rtf, rtf, .txt; .html, .htm, .webarchive
PDF Viewer	.pdf
Text Editor	.txt
Image Viewer	.bmp, .gif, .ico, .jpeg, .png, .tiff, .xbm
Movie Viewer	.3gp, .l16, .m3u, .m4v, .mm, .mov, .mp4, .scm.
Audio Player	.aac, .aif, .aifc, .aiff, .amr, .au, .l16, .m3u, .m4a, .m4b, .m4p, .mp3, .pcm, .wav
Archiver	.zip, .rar

Additional Capabilities

Web Viewer	search contents
PDF Viewer	supports displaying and creating of PDF text annotations, bookmarks are stored inside PDF outlines, search contents
Text Editor	works as full-featured text editor
Audio Player	support playlists, can play music in background, can be controlled using iOS media controls

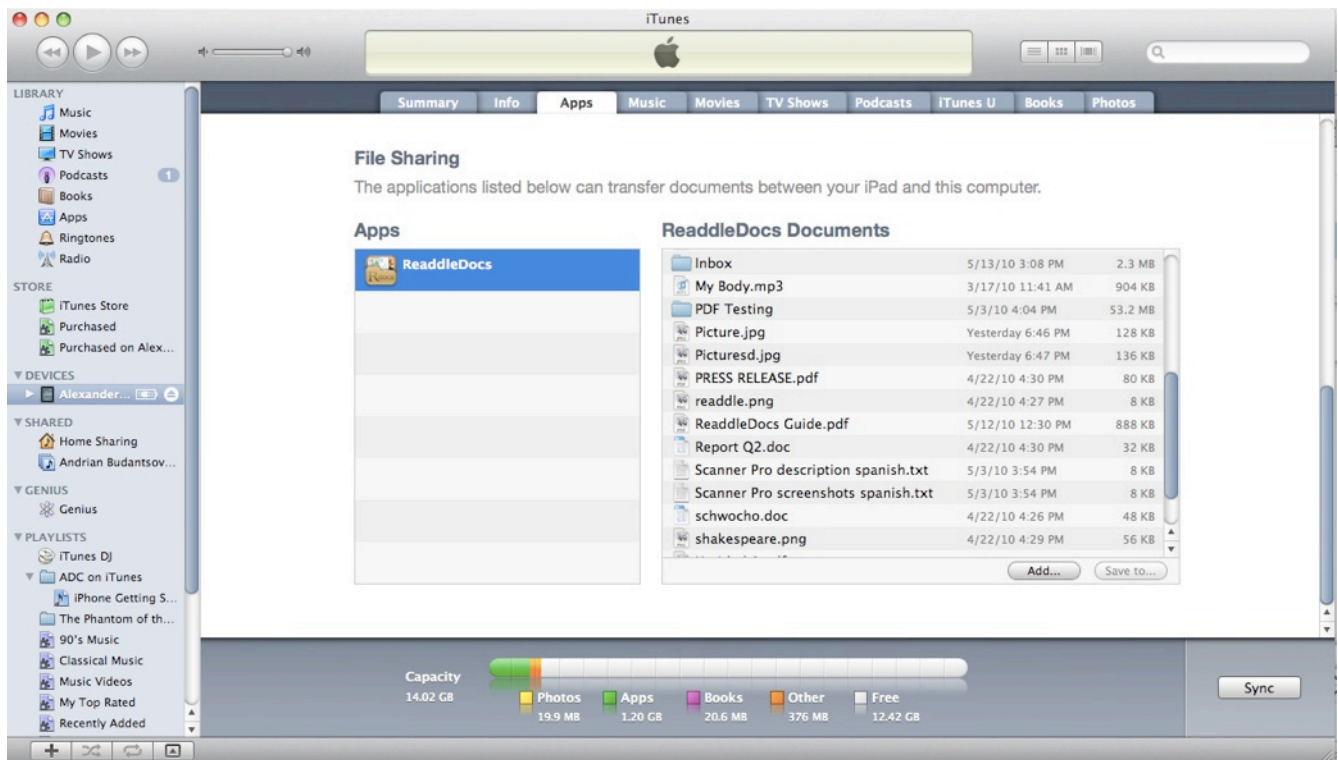
PDF Viewer, Image Viewer and Web Viewer support standard iOS pinch gesture for zooming document.

All viewers besides PDF Viewer store their bookmarks in ReaddleDocs settings on your iPhone.

Copying and Sharing Files

USB File Transfer

ReaddleDocs supports iTunes USB File Sharing. To transfer files, connect your device to computer via USB cable, open iTunes and click on device name in the left column. Afterwards, click on the Apps tab and scroll it to the very bottom.



You can Drag & Drop files into ReaddleDocs document list or click “Add” button to use file selection dialog.

NOTE: To copy directory, you need to compress it. For Mac OS X users: take right-click on the folder and choose “Compress”. For Windows users: right-click the folder, select “Send To”, and then click “Compressed (zipped) Folder”.

ReaddleDocs as a Shared Network Drive

ReaddleDocs uses WebDAV protocol to share its data with other computers via Wi-Fi Network. Most popular operating systems and many programs have the ability to mount WebDAV resource as a network drive.







To connect to ReaddleDocs as a shared Network drive:

1. Make sure that your iPhone is connected to Wi-Fi network
2. Tap “Network” tab
3. On the top of the screen tap your iPhone’s address . “Wi-Fi Drive” dialog will appear
4. Tap “Wi-Fi Drive Help” to see detail instructions for connecting using Mac or Windows

You can also connect to ReaddleDocs with any web browser. Type IP address of your device into address bar. For IP address tap “Network” menu tab inside ReaddleDocs.

Network Storages

ReaddleDocs can access following storages:

	Dropbox		WebDAV
	Box		FTP
	SugarSync		SFTP
	GoogleDocs		Readdle Storage

As well as some other storages that work via WebDAV protocol (Storegate, MyDisk, filesAnywhere, CloudMe).

To configure access to network storage, select “Network” tab, tap “Add” and choose the storage you want to set up.

Network Storage Protocol Notes

FTP

By default, the application is restricted to FTP “home directory” — directory that is displayed first when you log in. If you want to access entire filesystem via FTP, specify “/” as a login path.

“Encoding” parameter should be set to filesystem encoding of the server. They are:

- “UTF-8” for most users,
- “Windows Latin 1” or “ISO Latin 1” for some european users.

SFTP

There are two ways of SFTP authorization: by specifying a password, or by providing private key file. Private key file itself may be encrypted with pass-phase. Server private key is stored in iPhone Keychain.

By default, the application is restricted to SFTP “home directory” - directory that is displayed first when you log in. If you want to access entire filesystem via SFTP, specify “/” as a login path.

“Encoding” parameter should be set to filesystem encoding of the server. They are:

- “UTF-8” for most users,
- “Windows Latin 1” or “ISO Latin 1” for some european users.

GoogleDocs

GoogleDocs folders may contain several files with the same names. Distinguish them using file modification date. The same GoogleDocs file may reside in different folders simultaneously. “Network Storage Sync” (see next page) feature of ReaddleDocs does not work with GoogleDocs.

Readdle Storage

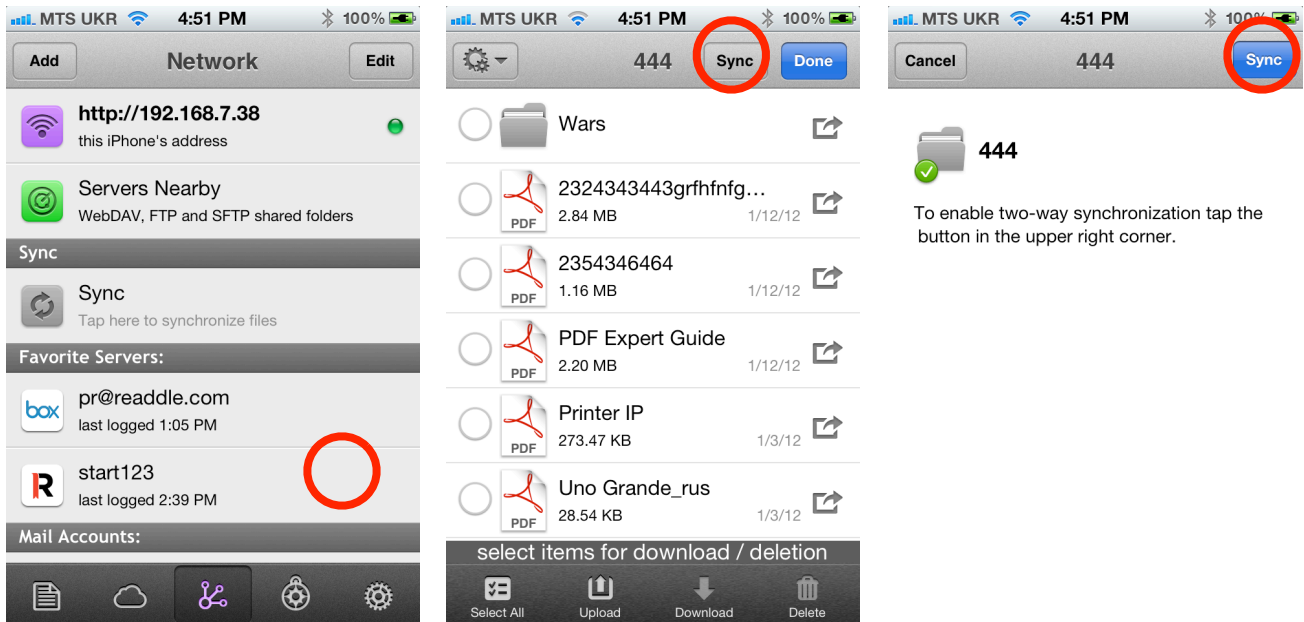
Readdle Storage is a great way to store files online. All ReaddleDocs users are eligible to get free lifetime Readdle Storage account. You can upload and download files from ReaddleDocs and using any web browser on your computer.

You may create new account right from the device, or by visiting **storage.readdle.com** from your desktop computer.

Network Storage Sync

This feature provides an ability to sync a folder content and have all the recent changes made either from ReaddleDocs or from your computer.

To create Sync-Folder:



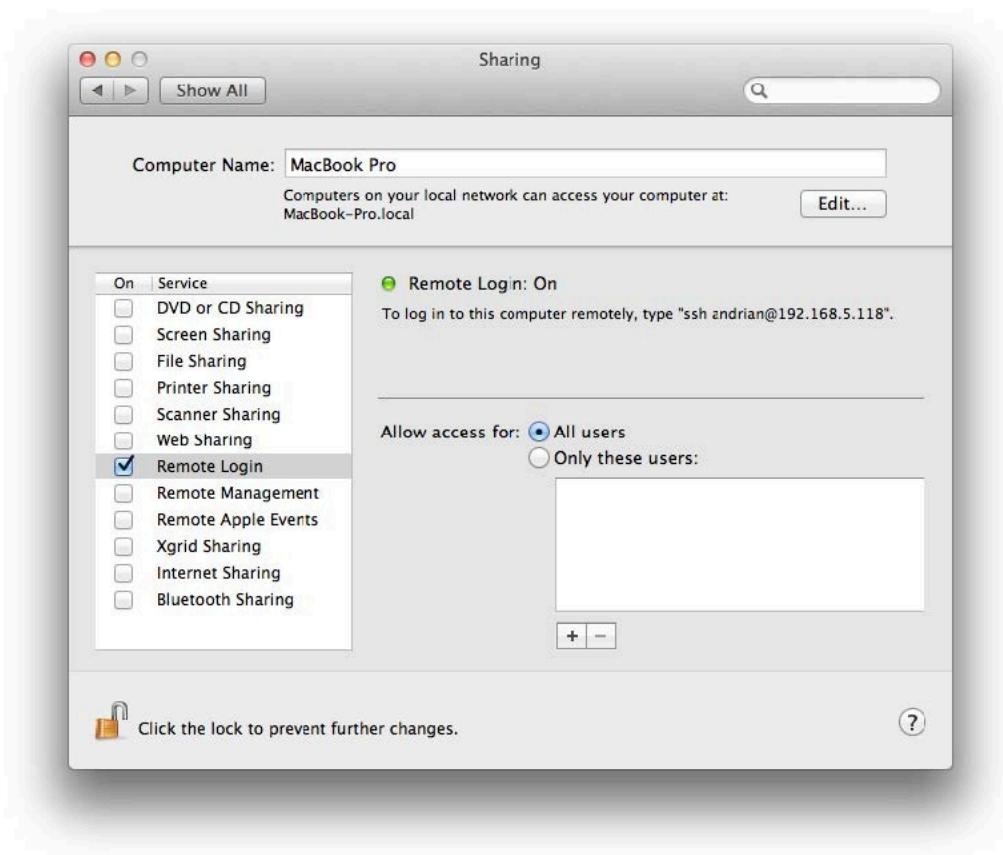
1. Establish a connection to the web storage you want to sync with
2. Navigate to the folder you want to sync and open in
3. Then tap “Edit” button at the top.
4. Tap “Sync” button
5. Confirm that you want to enable two-way sync with this folder by tapping on “Sync” button again.
6. After that, the synchronization will be automatically started, Sync button will appear at the “Network” tab, and each time you press the “Sync” button, all the recent modifications will be uploaded to this folder on your web storage.

Connecting to “Servers Nearby”

With ReaddleDocs you can access available iPhones/iPads and other Mac OS X computers on the local Wi-Fi network:

To add your Mac to “Servers Nearby”:

1. Go to your “System Preferences” on your Mac OS X: Lion and follow the “Sharing” section.
2. Ensure you have “Remote Login” option checked.
3. After that you are going to see your Mac as SFTP service in “Servers Nearby” section on your device.



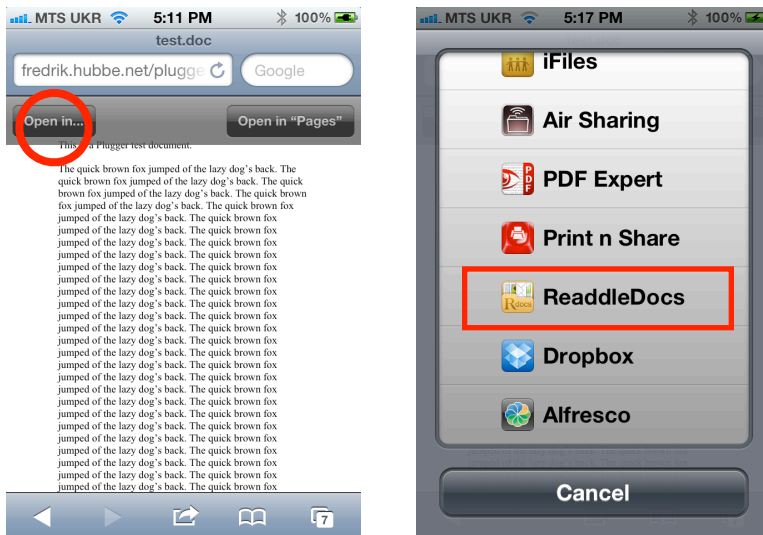
To login to the server follow next steps:

1. Go to the “Network” tab within Readdle Docs.
2. Tap “Servers Nearby” and select the server you want to connect to from the list.
3. Enter your user name and password, if needed.

Downloading from the Web

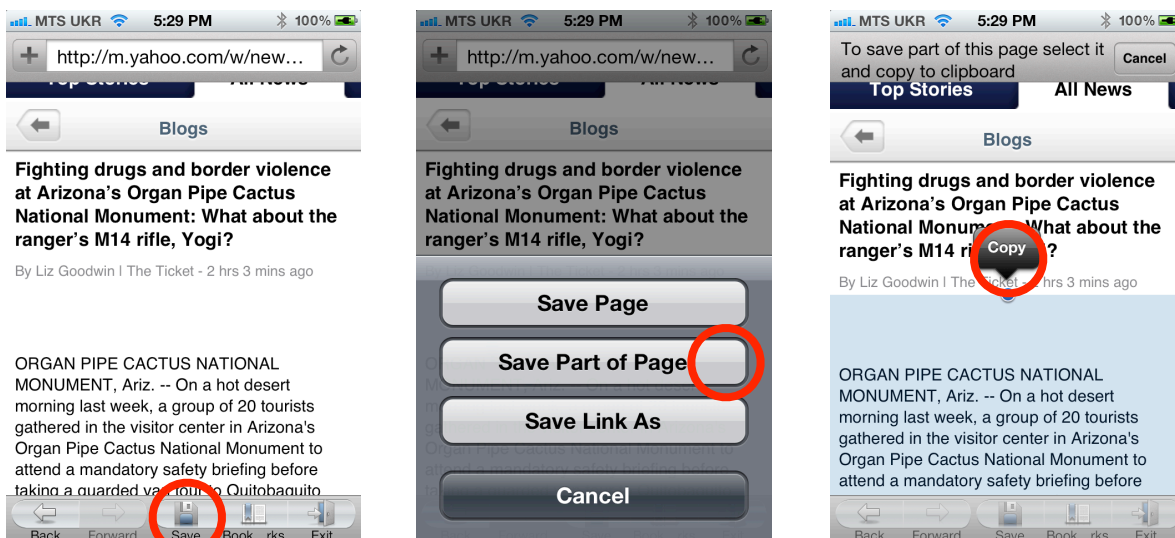
Use ReaddleDocs built-in web browser or Safari browser to find and save documents from the Web.

Safari on iOS displays “Open In...” button for certain file types:



To open a web page inside ReaddleDocs browser, change the first part of URL in the address bar from “http://” to “rhttp://” (just add r at the beginning), and press “Go”.

Built-in ReaddleDocs browser has “Save” button that allows you to save current page:

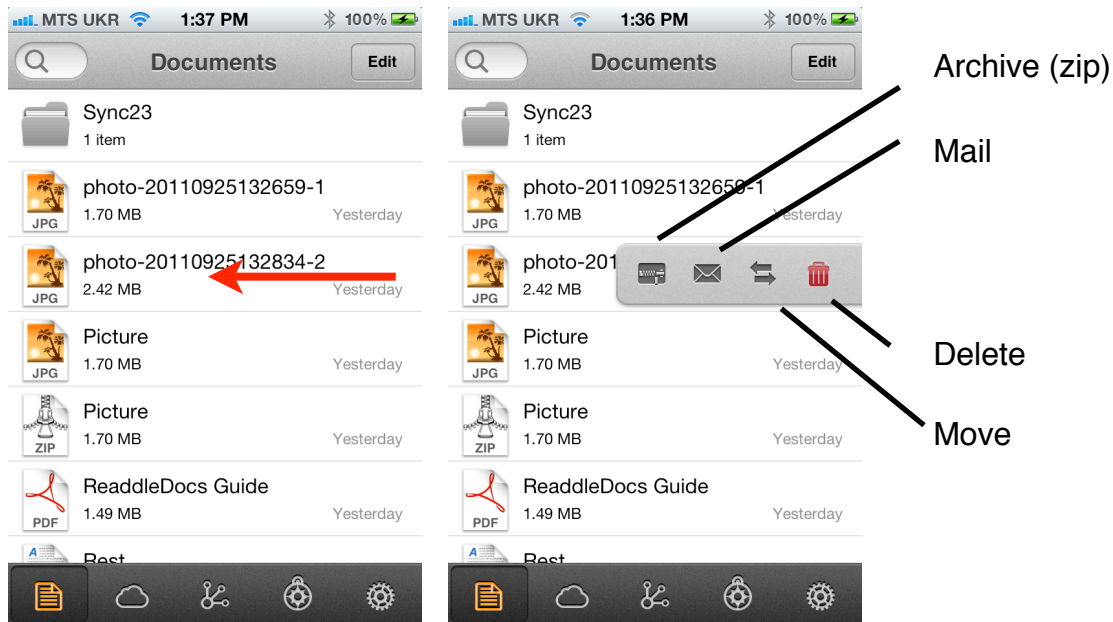


When saving web-pages we suggest to use “Save Part of Page” option for better results.

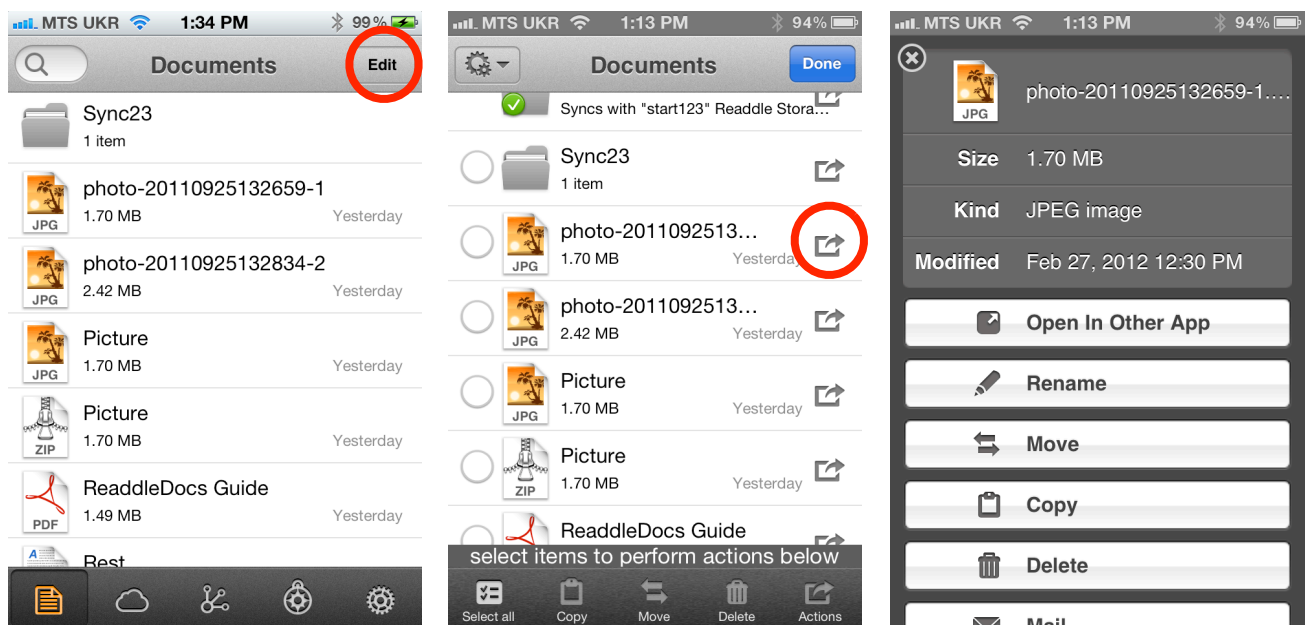
File Management

Working with files in ReaddleDocs is simple. Tap on file to open it, tap on folder to view its contents.

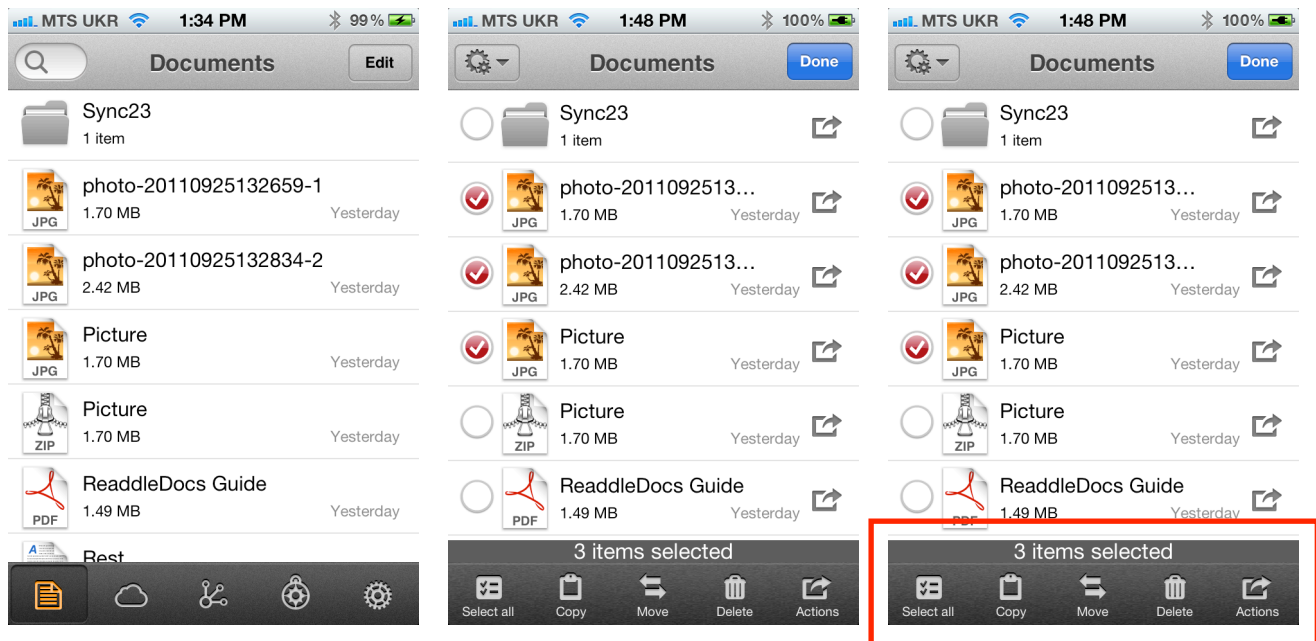
To perform operation with single file — just swipe left or right with your finger on it:



Or tap “Edit”, then tap “Action” icon:



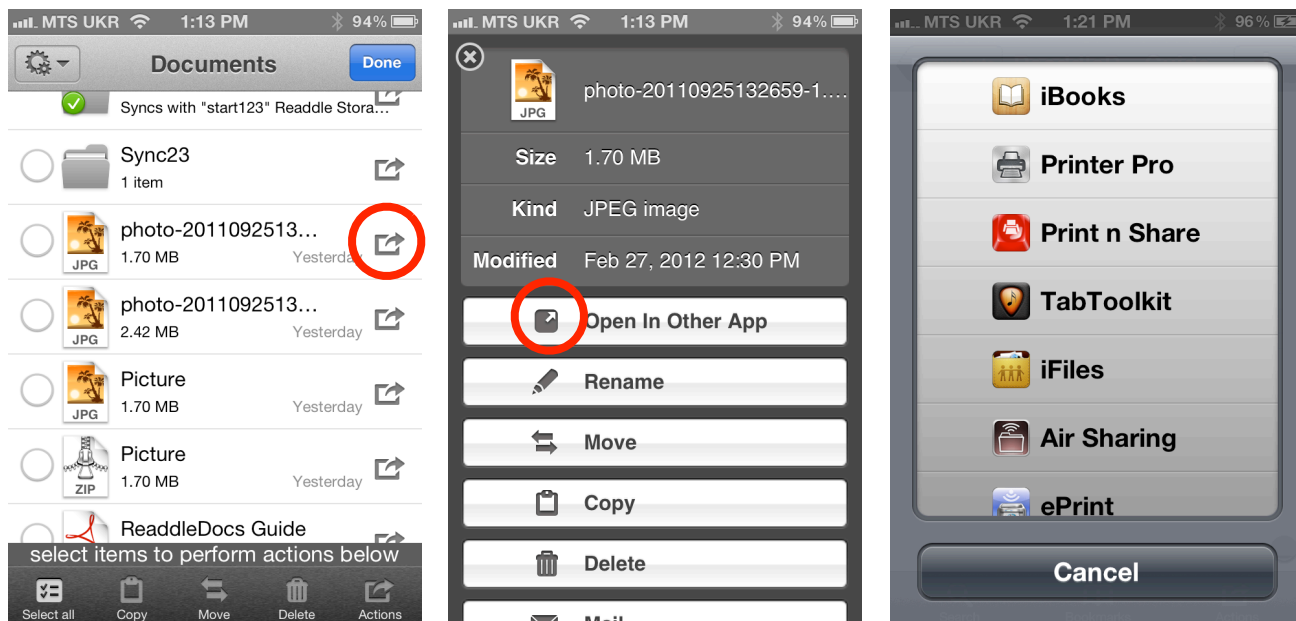
To perform operations with multiple files at once, tap “Edit”, then select several files and choose operation at the bottom toolbar.



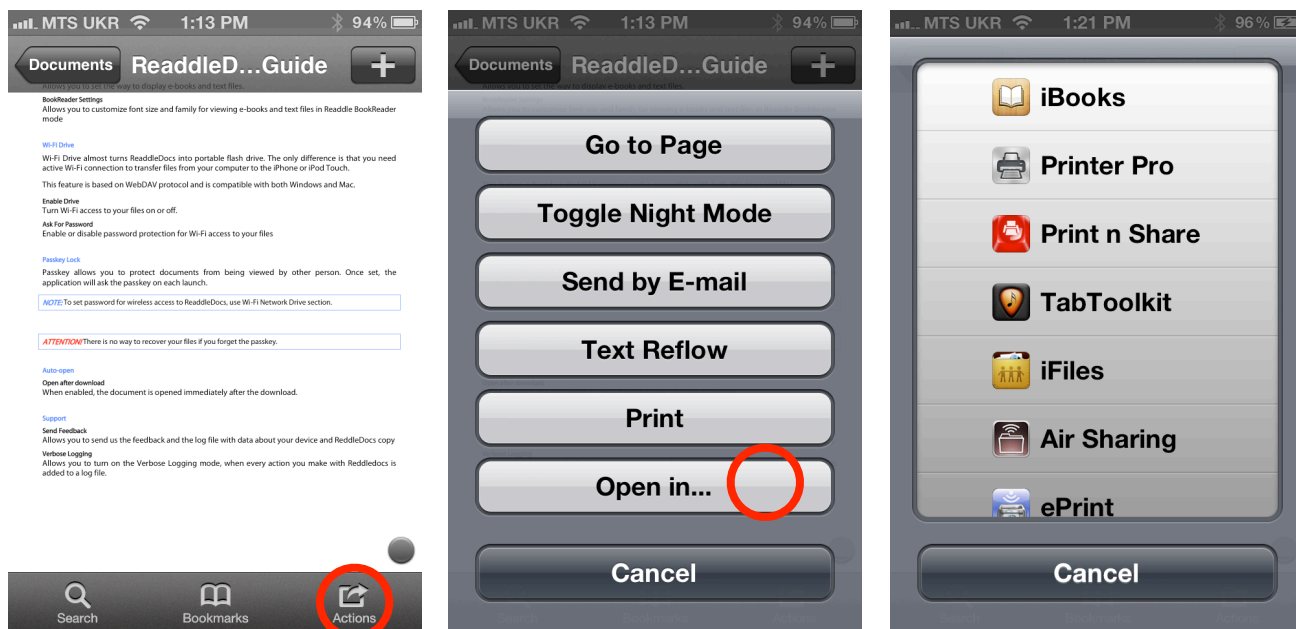
Similar file management operations are also applicable to iCloud and Network tabs.

Interacting with Other Apps

Every file in ReaddleDocs may be transferred to other app that is able to process it. You can access “Open In” dialog using File Manager:



Or by using “Actions” menu inside viewer:



Also ReaddleDocs may be used as “Open In” target from other apps. The most notable example is the ability to open attachments from the Mail application in ReaddleDocs.